

Alpha Trading Corporation is a leading supplier of high-quality spare parts for earthmoving machinery, diesel engines and drilling rigs. Our products are suitable for leading machine makers. We also provide reconditioning services for generators and earthmoving machines along with performance guarantee.

Products suitable for:

Excavators, bulldozers, wheel loaders, motor graders, trucks, trailers, power generation sets, marine engines, mud pumps and drilling rigs.

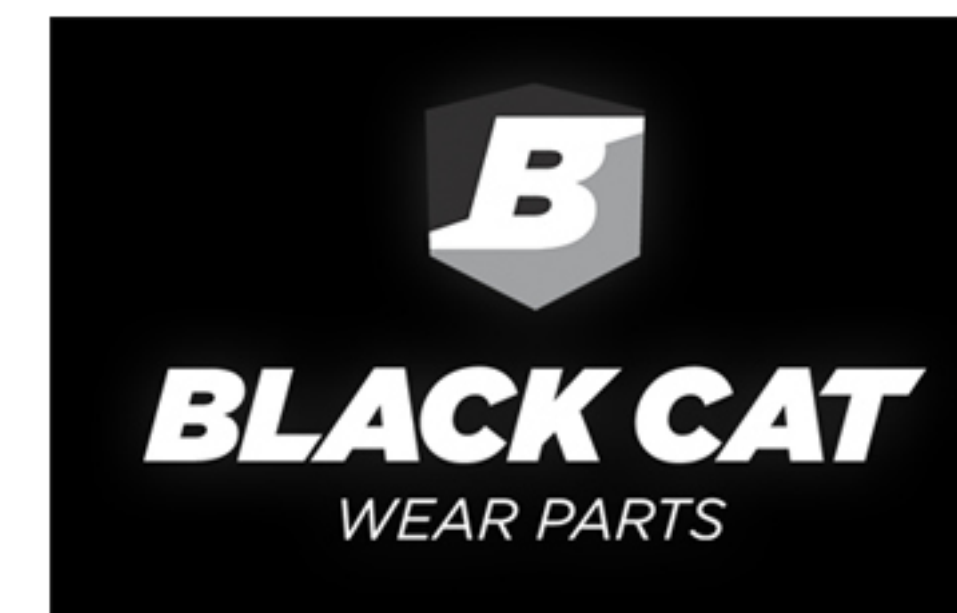


Alpha Trading Corporation, Lahore



High quality aftermarket products

The company is specialized in procurement and distribution of high-quality aftermarket products. All of our products conform to the OE standards of quality and performance. They are sourced from the world leading suppliers. These suppliers are either OEMs or have equivalent standard of manufacturing. Following are our leading suppliers of earth moving machinery products:



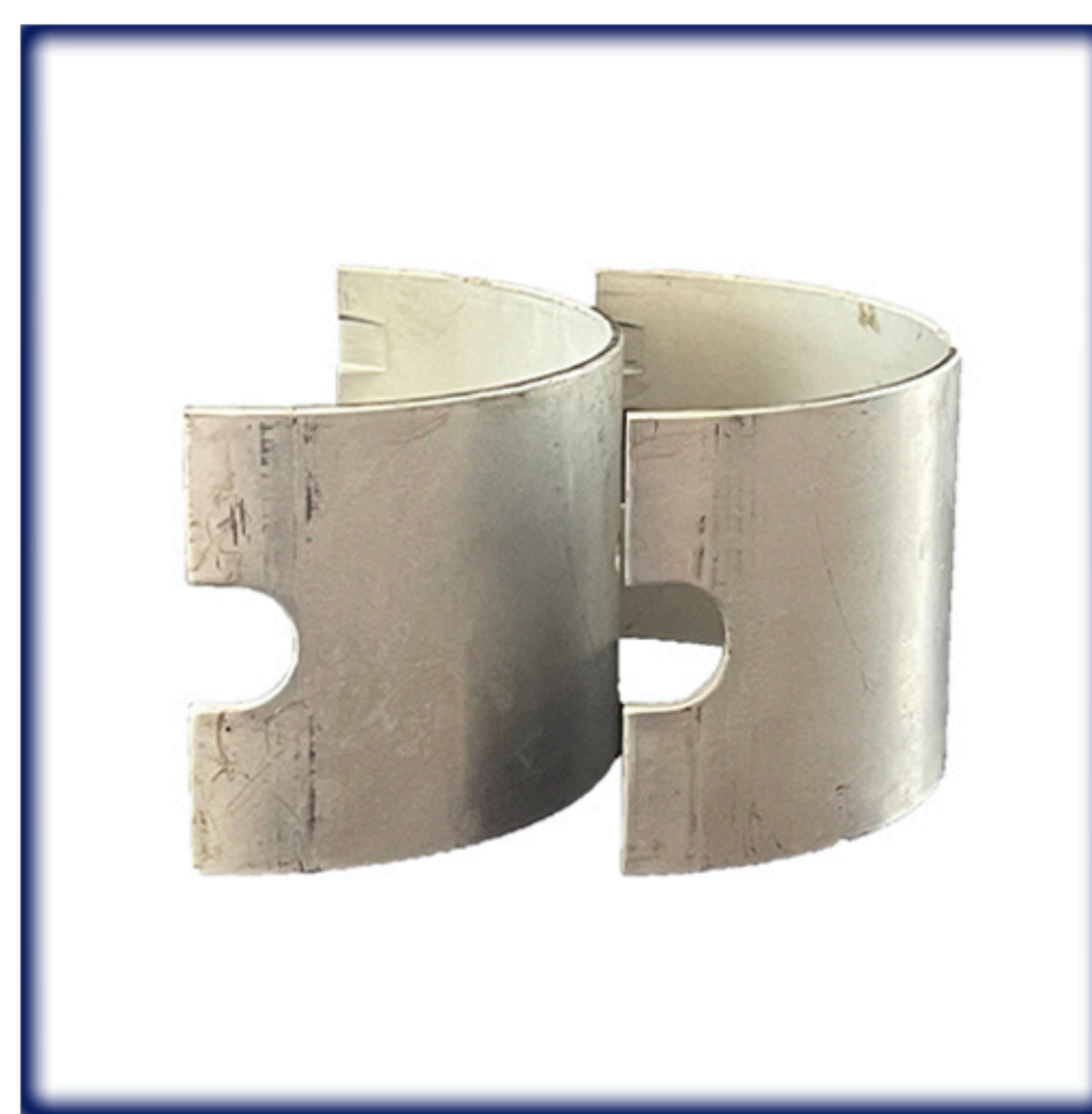
Engine Hydraulic and Transmission Parts

Our engine parts are made to endure stressful working conditions. Their perfect design, geometry and material enable them to withstand high demands of your engine. Our parts are manufactured with OEM parameters and are interchangeably used with genuine parts.



Piston Rings

Wear resistant piston ring tolerant to high pressure and friction



Engine Bearings

Perfect material & geometry of our Main & Conrod bearings ensures less friction. Available in standard & large sizes.



Oil Pumps

Designed to maintain optimum oil circulation.



Cylinder Liners

Corrosion resistant cylinder liners manufactured with extreme precision

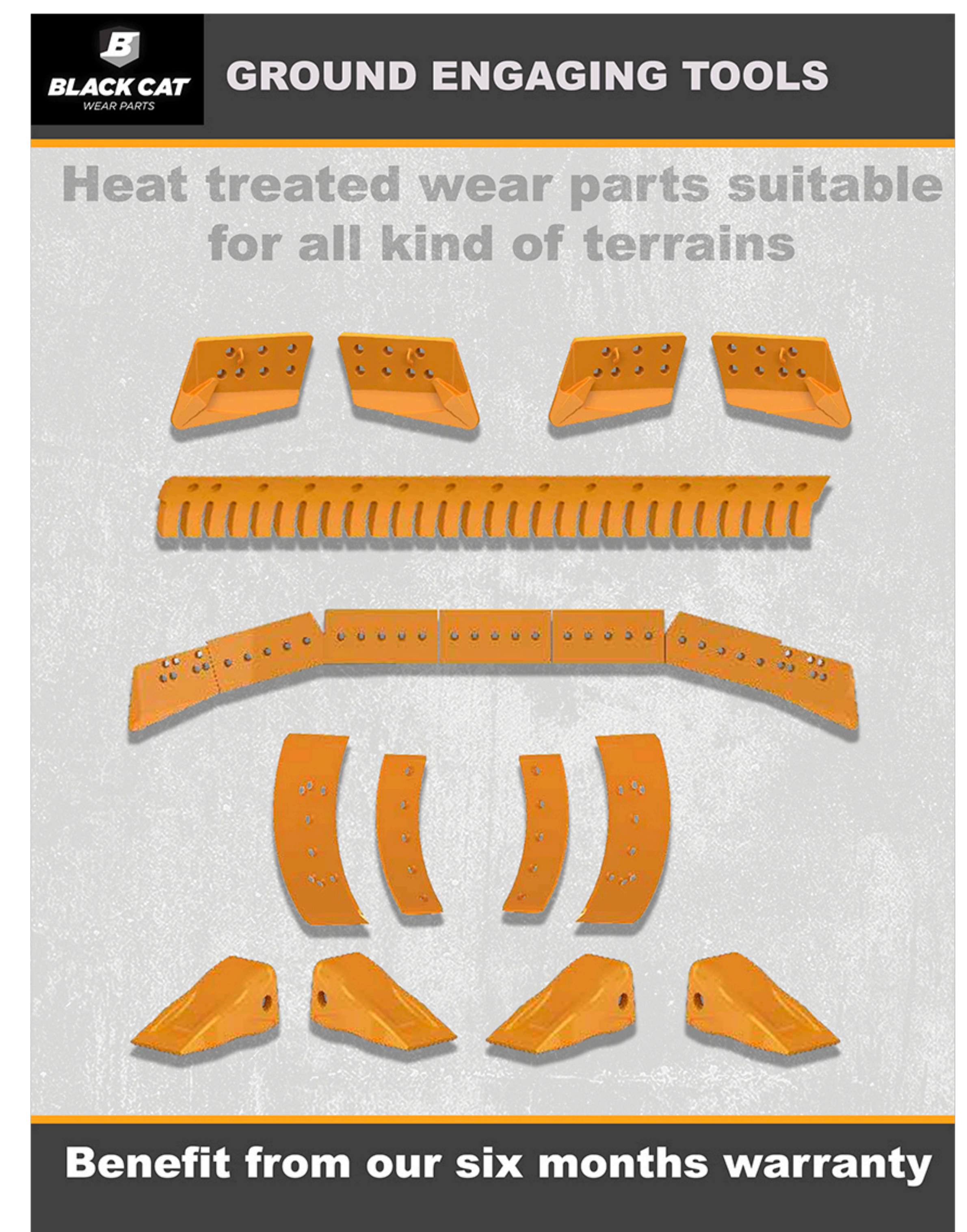


Hydraulic Pump

Maximize your machine output

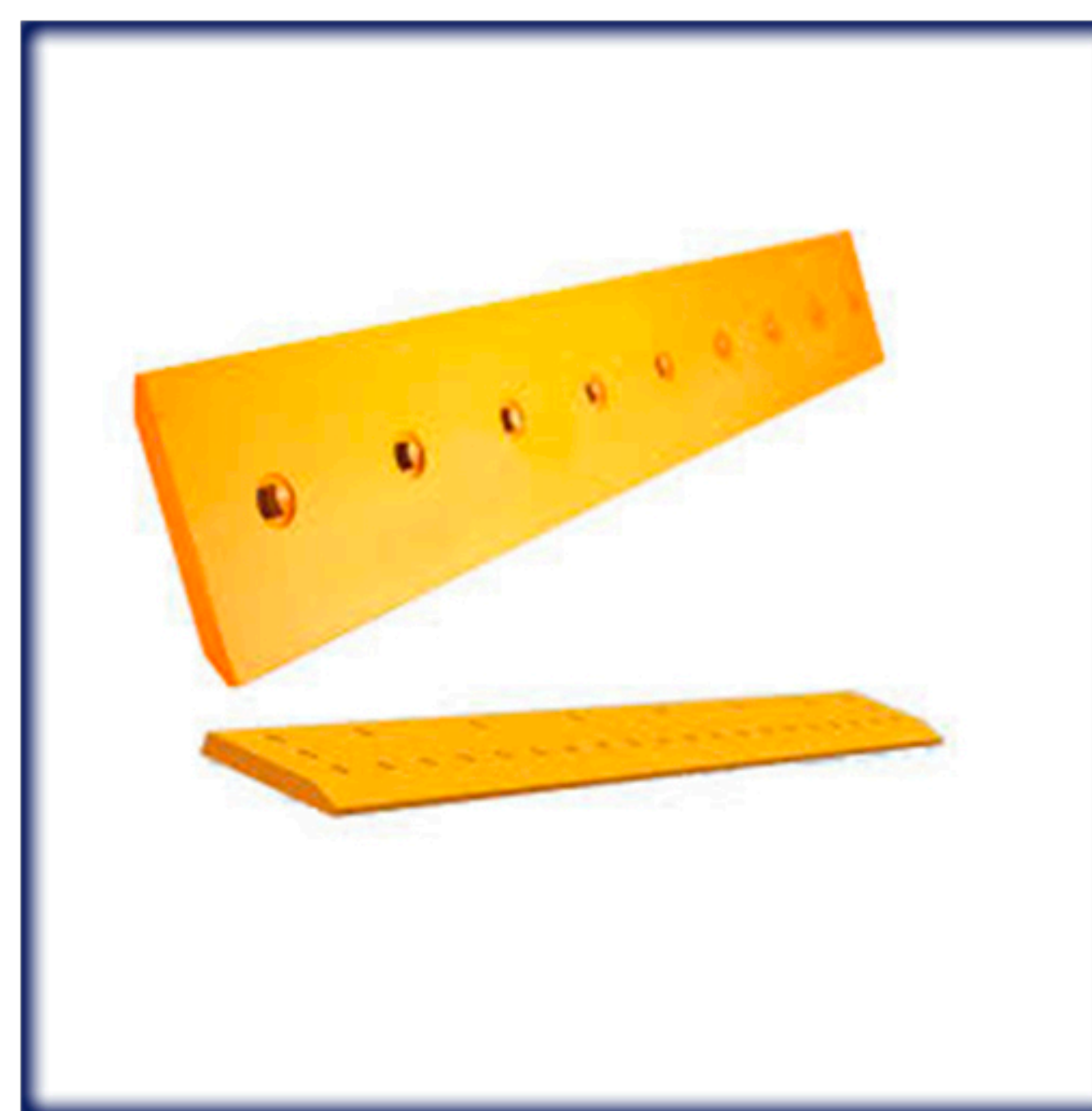
Ground Engaging Tools (GETs)

Our ground engaging tools maximize your field performance with minimum operational cost. They are manufactured to stand up to the toughest demands of industry. They are heat treated for long wear life and breakage resistant.



Teeth

Heat treated for optimum strength



Cutting Edge

Boron steel cutting edge with excessive hardness



End Bit

Boron steel end bits suitable for hard terrain

Fuel Injection System

Your most reliable partner for fuel injection system covering nozzles, injectors, plunger and barrel, delivery valve.



Nozzles

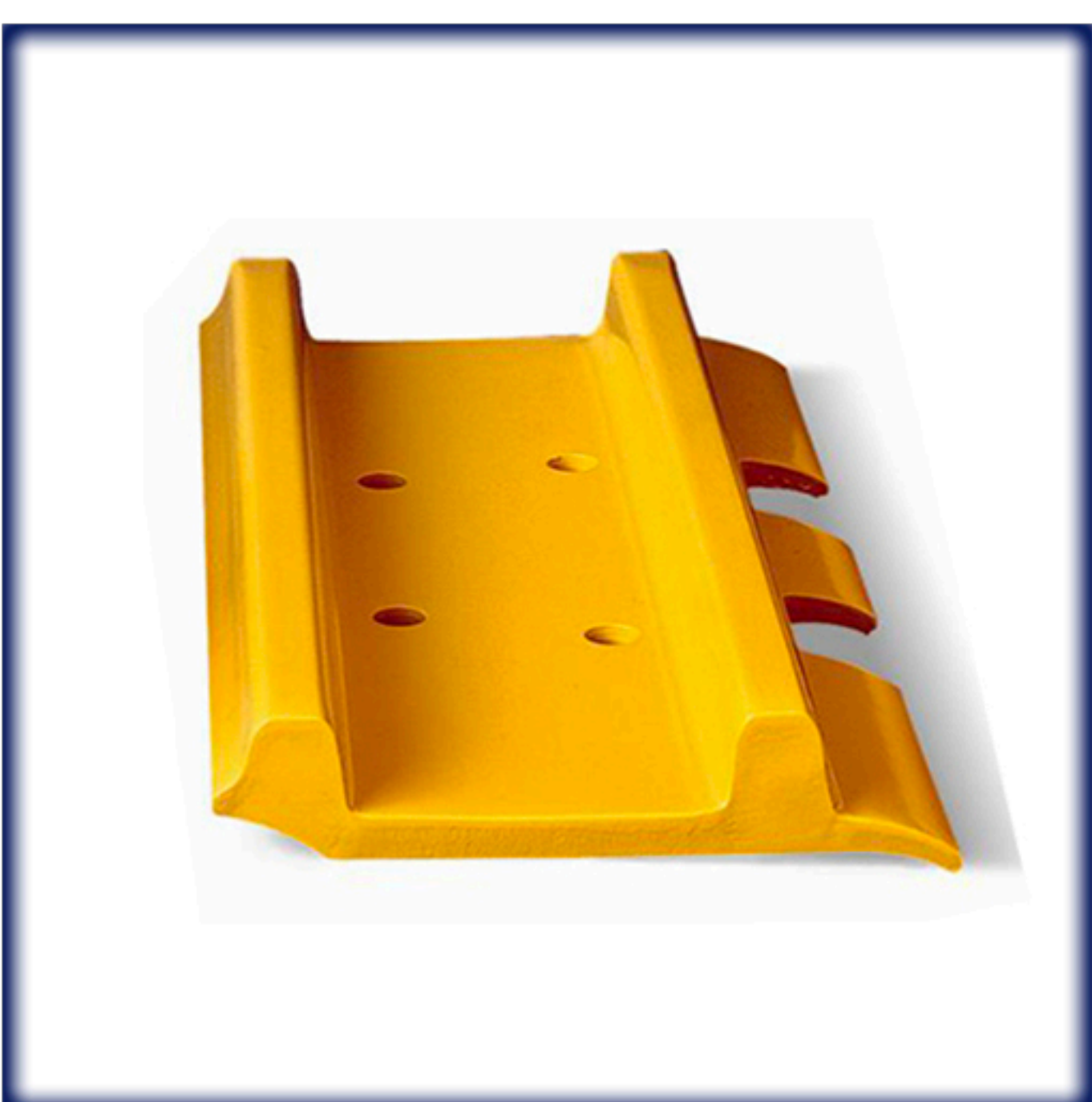


Injectors



Undercarriage Parts

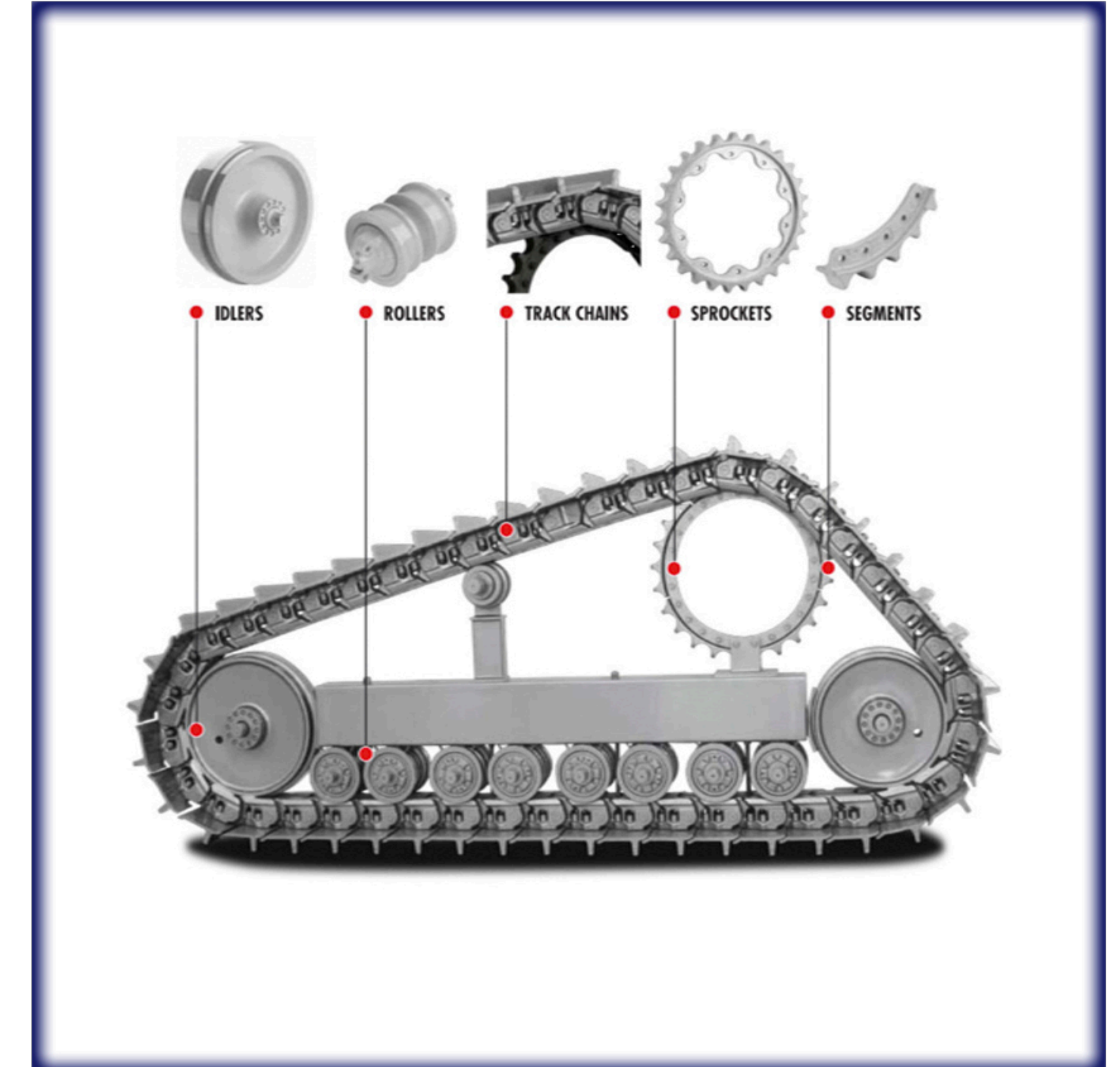
We provide high quality undercarriage parts which are interchangeable with genuine parts.



Track Shoes



Track Chains



Track Rollers



Idler and Sprocket

Alpha Trading Corporation is an authorized distributor of DANDO Drilling International Ltd for Pakistan. We have well established sales and after-sales network to support our clients. We also provide spare parts of DANDO Drilling Rigs, including mud pump, truck parts and drilling components. Our drilling tools and equipment are sourced from the world leading manufacturers. Our parts are suitable for direct circulation, reverse circulation, DTH and wireline coring rigs.

DANDO Multi-purpose Drilling Rigs

DANDO is a UK based manufacturer of high-quality drilling rigs. The company has been serving in this sector for the last 150 years. It offers a wide range of hydraulic rotary and cable percussion drilling rigs for the water well, geotechnical, mineral exploration and GSHP sectors.

Mineral Exploration Drilling

Dando's mineral exploration rigs can be set up for wireline coring, reverse circulation, rotary air blast, or open-hole boring and have proven themselves over and over in some of the most punishing conditions around the world.



Mineral Exploration Rig Pakistan

Geotechnical and Multipurpose

They can be used for a wide range of site investigation methods including window sampling, dynamic probing, SPT, hollow stem auguring, coring and more.



Multipurpose Rig Burkina Faso

Water well drilling Rigs

Designed to be tough, durable and highly reliable, Dando's water well drilling rigs are providing safe, clean water in some of the world's most challenging environments, where inferior rigs will simply not cope.



Water-well Rig Myanmar